



OMEEO REGION NEWS SHEET

SUPPORTED BY



Wednesday 30 October

AN OMEOSHIRE LIONS CLUB PROJECT

20 Cents

SERVING ENSAY, SWIFTS CREEK, OMEEO. BENAMBRA, DINNER PLAIN.

NEWSHEET ENQUIRIES:

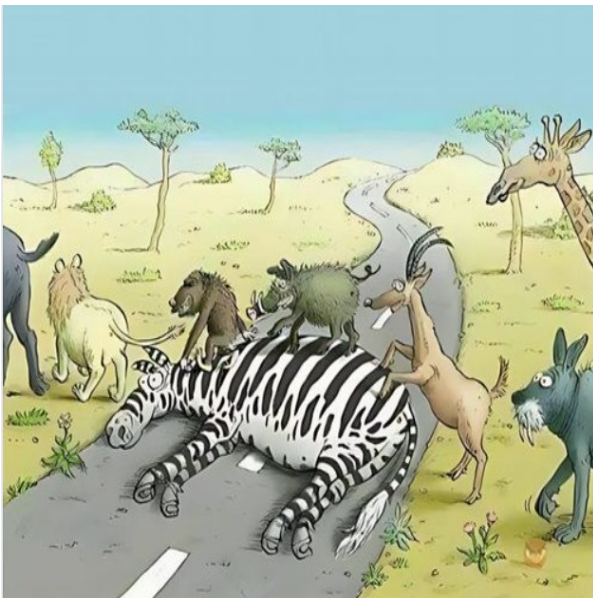
Email: newsheet@omeeo.org.au
Phone : 5159 1515 www.omeeo.org.au
Post: P.O. Box 182 Omeo 3898

Medical Services-Omeo Region

For **URGENT** Medical Care call **000**
Omeo Medical Centre
Please Phone: **51 590 140**
To arrange an appointment
Monday to Friday 8.00am—5.00pm
Pathology: Collection Monday to Friday
8.00 am—9.00am
by appointment only

OMEEO COMMUNITY HUB LUCKY NUMBERS

19.Terry Petersen ... 37. Arija ...
SNAPDRAGONS JOKE



Omeo Weather 30th October-6th November

Wed 8-26. Thurs 7-18. Frid 3-18. Sat 14-24.
Sun 8-26. Mon 5-21 Tues 7-21. Wed 8-26

District Diary

Wednesday 30th October

Omeo to Bright Bus..departs Omeo 8.00am return 3.20pm
Lego Club Omeo Library.....3.30pm-4.30pm

Thursday 31st October

Omeo Opportunity Shop Open..... 11.00am-3.00pm

Friday 1st November

Omeo to Bright Bus...departs Omeo 8.00am return3.20pm

Saturday 2nd November

AA. meeting 1st Saturday of month, CFA rooms2.00pm
Omeo Opportunity Shop Open..... 11.00am-3.00pm

Sunday 3rd November

Anglican Church No Service
Catholic Prayer Meeting Omeo
Golf Comp 12.00pm

Monday 4th November

Omeo to Bright Bus depart...Omeo 8.00am return3.20pm
The High Country Singers Omeo Shire Offices.....2-3.30 pm

Tuesday 5th November

Listen with Lorna live radio O.S.C.A.R. fm ... 12.00-2.00pm

NB. The bad news is time flies.... The good news is
you're the pilot.

Amicus.



Medical Centre
Charles Luiz & Howard Goldenberg
Please note some days are via telehealth
Phone:5159 0140



Darren Chester
Federal Member for Gippsland

Shopping Locally

Creates Local Jobs
#lovegippsland



1300 131 785 **www.darrenchester.com**



186 Day Avenue. Omeo. 3898
PH: 03 51591663 FAX: 03 5159 1686
AFTER HOURS: 0474 017 705
EMAIL: omeopharmacy@gmail.com
DELIVERY AVAILABLE



R.E.C. 17886

MITCHELL
Electrical Services

INDUSTRIAL — DOMESTIC
ELECTRICAL MOTOR REPAIRS

CONTACT: TOM MITCHELL
5157 3200 — 0428 573 205
"From The Lakes To The Alps"



UNITING CHURCH
AUSTRALIA SWIFTS CREEK

We gather on the **first Sunday of the month** at 10 am for Worship and morning tea afterwards.
 All are welcome

Activities for the younger ones
 Enquiries to Rev Marian Bisset
Ph: 0421 067 212

TREE TRIMMING
 HEDGE TRIMMING
 GUTTER CLEANING
 STUMP GRINDING

FREE QUOTES
 Ph: GARY **0427772634**
 email: garysmaintenance@gmail.com

7 Days

STEEP
 MOWING + EDGING

Skicom Mt Hotham
 CARPET/UPHOLSTERY/MATTRESS CLEANING SERVICE

Scott DeVries
 0429 723 274
 scottdevries2@icloud.com




STUBBORN DIRT, GRIT, STAINS, PET ODOUR, ALLERGENS... BE GONE!

Annual General Meeting
19th November 2024
 7:00pm at the Tambo Valley Bowls Club
 Swifts Creek Recreation Reserve

The Swifts Creek Football Netball Club would like to invite you all to attend our 2024 AGM.

All committee positions will be declared vacant on the evening.

A General Meeting will follow.
 Look forward to seeing you all there!

Alpine Pistol Club
AGM
 at 1.00pm 3rd of November
 at club room.



**Daily Services between
Melbourne - Bairnsdale - Omeo**
Bairnsdale Depot - Grinters Transport,
 16 Lawless Street, Bairnsdale, 3875
Melbourne Depot - Vic Freight Specialists, 13B,
 13-17 Progress Street, Dandenong, 3175
Omeo Depot – Omeo Welding & Engineering &
 Equipment Hire, 87 Bilton Street, Omeo, 3898
 Phone: (03) 5152 5778 Fax: (03) 5152 3329
 Mobile: 0418 516 857 Email:
 admin@grinters.com.au
 Pallets . Parcels .
 ♦ Livestock . Hay .
 ♦ Machinery . Bulk
 ♦ General . Wool
 ♦ Refrigerated Freight . Farm Equipment
Leaves 9.30am from Bairnsdale to Omeo



Jens and Maureen Hudson

18 Great Alpine Road Lucknow 3875
 Phone : Maureen 0402 001 593
 Jens 0402 006 268

Many fabrics to choose from for all your
 furnishing needs Over thirty years in
 Business and 76 years' experience in the
 industry, between us we can help you.

Including car and motorbike seats

- Car roof linings replaced
- Cushions made to size
- Foam cut to size
- Toyota Land Cruiser seat foams



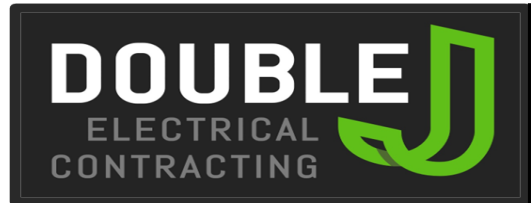
- Groceries
- Meat
- Fruit & Veg
- Gas Bottles
- Bottle Shop
- Post Office
- Fuel ULP & DSL + Winter Mix
- Breakfast & Lunch Daily until 2pm
- Fish & Chips - Friday Nights 4pm-7pm
- Eat In or Take Away
- Personalised Weekly Orders of Meat, Fruit & Vegetables

Drop in and meet our awesome team to grab a
 bite to eat or stock up on supplies for your
 adventure around Sunny Benambra

TRADING HOURS

Weekdays 8am - 5:30pm
 Weekends 9am - 5pm
 Public Holidays 9am - 5pm

03 5159 9209



Bore pumps Sales and servicing,
 Mains and solar operated

TV Installation and servicing of both
 Satellite & "Terry"

Generator - Sales/Hire/Installation/

Mains to Generator
 changeover switches and inlets

Electrical Appliance Repairs/Maintenance

Electrical Installations
 Industrial to domestic..

Competitive rates
 and servicing the Omeo region

Contact Jeremiah on 0418 909 978

**Switch all
paper
products in
your life to
100% recycled**



Did You Know?

Toilet paper, printing paper and almost all other paper products are available as recycled options.

For more information contact Council or visit our A - Z - Where to next? on our website.



**EAST GIPPSLAND
SHIRE LIBRARIES**



LEGO Club 2024



Junior LEGO enthusiasts are invited to attend our after- LEGO Club school sessions.

The sessions incorporate freestyle activity and themed construction activities.

Donations Welcome

The library will gladly accept donations of old or new LEGO brand pieces for our LEGO Club collection.

For more information, phone **51524225** or ask in person at the library about these **FREE** sessions.

Omeo Service Centre

3.30pm-4.30pm

Every Wednesday

Except School Holidays



All Children must be accompanied by an adult

ALL SCREENS GIPPSLAND
SALES - SERVICE - REPAIRS

**GLASS & GLAZING –
WINDOW REPLACEMENTS**

– SHOWER SCREENS – ROBE DOORS –
SECURITY DOORS – FLY SCREENS &
MORE

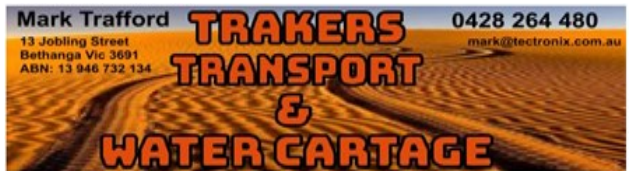
Servicing - Ensay, Swift Creek, Omeo,
Benambra & Dinner Plain

OFFICE: 5152 6791

JUSTIN: 0457 775 168

emailsales@allscreensgippsland.com.au

www.allscreensgippsland.com.au



Specialising in the following services
Potable Water Cartage

Transport of general freight, Agricultural goods,
Motorbikes, Quad bikes, Mowers
Small tractors, SXS's, Machinery parts,
Bagged grain and much more.

Reasonable rates

Truck equipped with 1,000 KG. tailgate loader
Full tarpaulin if required,
ability to load and unload goods
with 1.6 tonne all terrain pallet jack.
Truck capabilities: 6.tonne, 4x4
Tray size: 5.5 mtrs x 2.4 mtrs.
Flat top trailer 6.3 mtr x 2.5 mtr

Transporting weekly to Omeo and district
from Albury/Wodonga Corryong
Orders phoned or emailed by Tuesday
11 am For delivery on Wednesdays

Contact Mark for delivery charges on
0428 264 480

Mark @tectronix.com.au



OMEEO RSL

Notice of Annual General Meeting

Wednesday 6 November 2024

@ 11:00am, Omeo Shire Office

Nominations for Committee members
are now open

All positions will be declared vacant

New Service and Affiliate Members
are most welcome

For general enquiries contact
Renee on **0468 499 295**



Newcomen Herefords

Stockman / Farm Hand Ensay

We are seeking the services of a Stockman/
Farm Hand to assist with the operation of
stud and commercial cattle herds

Details as follows

Position is permanent part time or full time.

**Duties include cattle handling, fencing,
spraying and machinery operation**

Accommodation available

Salary commensurate with experience

**Please contact either Barry Newcomen
(0427 242 238) or
Reece Newcomen (0427 573 340)
for further information**

NEW RUSH BREWHOUSE

Phone :5159 1276

Opening Hours

Friday from 5pm

Sunday Breakfast 8am 12pm

Sunday Lunch 12- 2pm



**Community Centre
Swifts Creek Inc.**

ABN 76 381 866 949

6879 Great Alpine Road
Swifts Creek
VIC 3896
M: 0491 697 298
E: ccswiftscreek@gmail.com
Assoc. Reg. A0013236U

ANNUAL GENERAL MEETING

Wednesday 20 November 5:30pm

6879 Great Alpine Road, Swifts Creek

All Committee positions to be declared vacant

New membership applications welcome



Please RSVP for catering purposes to
Leanne Stedman, Manager
0491 697 298
or via email: ccswiftscreek@gmail.com



OMEO PARK 1900

Where Footy Ground is now

OMEO HISTORICAL SOCIETY



Frontier Services
Standing with people in the bush



Come and join Rev Marian Bisset at the final service before Marian and Pru conclude in the High Country.

Sunday 3rd November, 10am at the Swifts Creek Uniting Church.

The service will include Communion and a short "Release of Ties" liturgy as part of the conclusion.

There will be morning tea afterwards and all are welcome to come along.

Marian has been the Frontier Services Bush Chaplain through the High Country, including Benambra to Omeo, Swifts Creek to Tambo Crossing, Buchan to Suggan Buggan.

FLYCO GIPPSLAND

SICK OF THOSE ANNOYING FLIES & SPIDERS HANGING AROUND YOUR HOME OR BUSINESS? LET US GET RID OF THEM FOR YOU!

WE ARE COMING YOUR WAY... VISITING ENSAY, SWIFTS CREEK, OMEO, BENAMBRA AND EVERY WHERE IN BETWEEN.

MONDAY 28/10 TO FRIDAY 1/11/24

0404 530 369



Locally owned & operated where customer service & satisfaction are our highest priority

Ensay Bush Nursing Centre Inc.

ABN: 53 882 887 069 AN: A0020069U

AGM 2024

Monday 11TH November

5.00-6.00pm @ EBNC

We welcome nominations for two Committee member vacancies.
Enquiries and RSVPs at welcome at the Centre ph: 5150 2416

NOTICE OF SPECIAL RESOLUTION

The EBNC is hoping to become a Deductible Gift Recipient which allows us to accept tax-deductible donations.

For this we need to alter to our Constitution to include a "revocation clause". This ensures that, if the Centre is ever wound up, any unspent gifts or donations will be transferred to another similar charitable organisation.

This alteration (below) will be proposed as a Special Resolution at our November AGM.

Proposed clause be added to Section 76 - Winding up and cancellation

(5) If the organisation is wound up or its endorsement as a deductible gift recipient is revoked (whichever occurs first), any surplus of the following assets shall be transferred to another organisation with similar objects, which is charitable at law, to which income tax deductible gifts can be made:

- gifts of money or property for the principal purpose of the organisation
- contributions made in relation to an eligible fundraising event held for the principal
- purpose of the organisation
- money received by the organisation because of such gifts and contributions.

SWIFTS CREEK BUSH NURSING CENTRE

T. 03 5150 2430

F. 03 5150 2439

Email: susan.carroll@gha.net.au

17 McMillan Street, Swifts Creek 3896
Open 9am until 5pm Monday to Friday
9am until 11am Weekends

Emergency on-call available after hours

Nursing services: No appointment required.

You are required to pay an annual membership fee or otherwise a non-member fee.

A Rural and Isolated Practice Nurse is available for wound infections.

Assistance with Virtual Emergency consults.

Pathology: Every Weekday, 9am until 9.45am

Women's Health

Ante/Postnatal Care

Suturing

Memberships

Family \$140, Single \$70 due 31st July each year

Hire of Equipment

Home visits if required.

24hr Bp monitor

Immunisations

Webpage – [https://](https://www.swiftscreekbushnursingcentre.com.au)

www.swiftscreekbushnursingcentre.com.au



Ensay Bush Nursing Centre

T. 03 5150 2416 F. 03 5150 2419

email: ensaybnc@gha.net.au



Open 9am until 3pm Monday to Friday

or 8.30am-9am and 3-3.30pm emergencies only

Nursing services: No cost No appointment required.

Pathology Monday to Friday 9 am until 10.30 am- No cost. No appointment required

Footcare: Approximately 6 weekly, \$15.00 cost ring for an appointment

Walk and morning tea: 1st Friday of each month may include some craft activities, no cost only delicious homemade cakes etc.

RFDS mental wellbeing: Fortnightly face to face and telehealth model.

Memberships: \$50.00 family and \$25.00 single due 31st of July each year, pro-rata payments accepted for new members.

AGM: Occurs on the second Monday of October all welcome, new members to the COM welcome.

Follow us on facebook and our webpage for events and employment opportunities.

WEBPAGE

<https://www.ensaybushnursing.com.au>

5 Great Alpine Road
Ensay, VIC. 3895



NOTICE OF ANNUAL MEETING 3HCR HIGH COUNTRY RADIO

Better known as OSCAR
Will hold their AGM
(again) on 24-11-2 2.30pm
The Hub- Day Ave. Omeo
We need a strong committee
with young energetic local
community members interested in
holding on to this important
Piece of local history.
Oscar Commenced
broadcasting from Mt. Sam in 1985.
All welcome. Bring your fresh
idea's for
SAVING OSCAR!

Detox your Home

Help keep your family, pets
and the environment safe

Saturday, 30 November 2024
Bairnsdale Livestock Exchange
11 Saleyard Road, Bairnsdale
9am - 12pm

Registrations essential at

detoxbairnsdale2024.eventbrite.com.au

If you need assistance to complete an online registration, please call
Council's waste team on 5153 9500 or Sustainability Victoria's
Detox Your Home team on
1300 363 744

What is accepted at Detox Your Home?

Acids and alkalis | ammonia-based cleaners | brake fluid
car care products | car coolant | detergents | disinfectants | fertiliser
fuels | glues | household cleaners | insect sprays | rat poison
weed killers | pool chemicals.

For a complete list, visit the link below
www.sustainability.vic.gov.au/accepted-items



WOODLANDS FIREWORKS

MONDAY, 4 NOVEMBER 2024

HOLLONDS/O'BRIENS ROAD, SWIFTS CREEK - 5KM NORTH OF SWIFTS CREEK

FREE ENTRY / LIVE MUSIC / PARKING AND CAMPING ONSITE

CATERING BY SWIFTS CREEK FOOTBALL AND NETBALL CLUB

LYREBIRD PLANT NURSERY



AND GARDEN SUPPLIES

35 HANKSHAW HILL ROAD OMEO – Last house on the left.

OPENING

MONDAY 4TH AND TUESDAY 5TH NOVEMBER

10AM - 4pm

THEN OPEN EVERY WEEKEND THEREAFTER OR ANYTIME BY APPOINTMENT

Visitors are welcome to wander through the Nursery garden and purchase plants including Vegetable and Herb seedlings – grown from seeds onsite. Established potted color, small shrubs and Native tube stock. Potting mix available.

CASH ONLY FOR OPENING WEEKEND

Please call Kell J

0438 373 789



The Caravan and RV Muster is on again at the golf club, Stanley Drive OMEO commencing Friday November 1st and continuing over the Melbourne Cup long weekend with Cup day activities finalising the event on Tuesday 5th November.

Bands providing pulsating music on the big stage on Friday and Saturday evenings, Cirque Mystique magician captivating his audiences with mind blowing illusions Saturday and Sunday coupled with many other activities designed to entertain the family.

All weekend bonfire to warm the soul with the highly acclaimed grand fireworks display Saturday night.

Competitions all weekend to amuse the young and young at heart and much more. Food and refreshments available.

Camping available on the fairways for the entire program.

Pay at the gate or go to Trybooking.com.au and search Omeo muster.

OMEO DISTRICT RESIDENTS PLEASE NOTE:

Daily entry for residents is free for adults and children. This has been made possible by East Gippsland Shire Council and jointly funded by the Victorian Government and Commonwealth Government under the Commonwealth-State Disaster Recovery Funding Arrangements.



OMEO GOLF RESULTS



Wednesday Twilight 23/10/24			Sunday 27/10/24	
9 hole stableford- start 4.30pm			18 hole stableford start 12.30pm	
Place	Points	Player	Points	Player
Winner	23	Jai Hayward	39	Steve Thomas
2nd	18	Steve Thomas	38	Dean Jobling/Walter Bower
3rd	12	Richie Adams	35	Chris Faithfull/John Reid/ Ken Worcester
NAGA	-	Not saying?	31	Pat McCormack
Nearest pin 7th	-	Dean Jobling	-	Dean Jobling
2nd Shot nearest 6th	-	Shane Carmody	-	Steve Thomas
2nd Shot 6th Sun			-	Christine Faithfull



27/10 Dean Jobling eagled the par 5 3rd hole

Come join us next Wednesday...all welcome.

Muster is on 1st to 5th November.

Ode To A Golfer

My Life Has Not Been Quite The Same, Since I Chose To Play This Stupid Game.
It Rules My Mind For Hours On End, A Fortune It Has Made Me Spend.

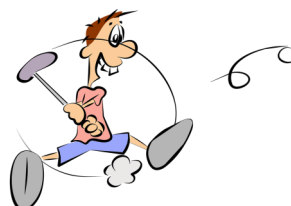
It Has Made Me Yell, Curse And Cry, I Hate Myself And Want To Die.
It Promises A Thing Called Par, If I Can Hit It Straight And Far.

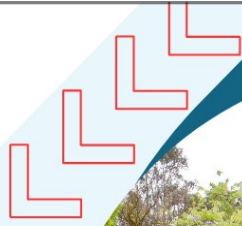
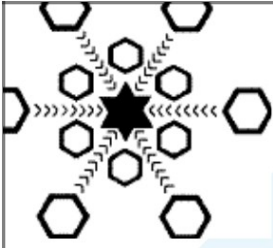
To Master Such A Tiny Ball, Should Not Be Very Hard At All.
But My Desires The Ball Refuses, And Does Exactly As It Chooses.

It Hooks And Slices, Dribbles And Dies, And Even Disappears Before My Eyes.
Often It Will Have A Whim, To Hit A Tree Or Take A Swim.

With Miles Of Grass On Which To Land, Finds A Tiny Patch Of Sand.
Then Has Me Offering Up My Soul, If Only It Would Find The Hole.

It's Made Me Whimper Like A Pup, And Swear That I Will Give It Up.
And Take To Drink To Ease My Sorrow, But The Ball Knows ... I'll Be Back Tomorrow





150th Celebrations

1874-2024

**SWIFTS CREEK P-12
FLAGSTAFF CAMPUS**

**NOVEMBER 9TH 2024
10-2PM**

COME CELEBRATE WITH US

SHARE YOUR STORIES ON
OUR LIVE PODCAST

swifts.creek.pl2@education.vic.gov.au

Cassilis Makers Market

School Tours & Historical Displays

Picnic Marquee Lunch provided

Kids Entertainment

Ceremonial Tree Planting

Celebratory Cake Cutting





Tickets

Admission: \$15 per person for entry to four gardens. Includes morning tea at the Omeo Golf Club prior to leaving. Tickets may be purchased at each venue

Bus tickets \$10 per person

For More Information

Colleen Thomas – Omeo Golf Club
cogsteve@me.com
0428 046 999

Kate Commins – CWA
katejcommins@gmail.com 0408 144 781

Sandi Beltrame – Omeo Garden Club
info@minerscottages.com.au

0412 356 241

Featured Gardens

1 Bindi Station

10.30–11.45

1578 Bindi Road, Bindi

Extensive country garden in a beautiful, historic setting.
Parking in the paddock.

2 Kate & Bruce Commins' Garden

12.00–1.30

8123 Great Alpine Rd, Tongio

Smaller, productive garden in farm setting
Parking in paddock
CWA sandwiches, slices, tea & coffee available for purchase. Toilet available.

3 Kelly Jobling & Pat McCormack's Garden 2.00am–3

35 Hankshaws Hill Road, Omeo
Mediterranean style cottage garden in a beautiful setting. Lyrebird Nursery. Parking beside track as indicated.

4 Colleen & Steve Thomas' Garden 3.00–4

2 Day Avenue, Omeo

Sustainable & productive garden, orchard, in a challenging site, with limited space
Parking in paddock



FOUR BEAUTIFUL GARDENS

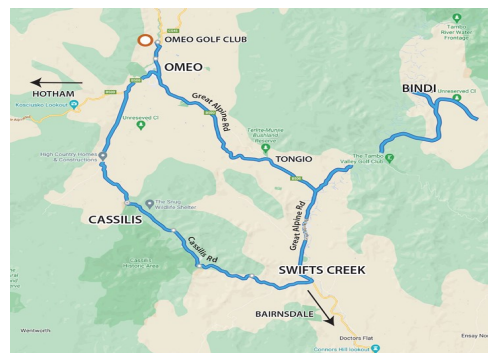
OMEO GOLF CLUB, 9.30 AM FOR Morning Tea. BUS leaves at 10am

Admission \$15

Proudly Presented By



Country Women's Association of Victoria Inc.
High Country Branch
Care Empower Contribute



Important Tagalong Tour Information

Register your name at each garden.
Stick to opening times as indicated.
No smoking.

There will be two Omeo Garden Club members and your host at each garden to answer questions and provide assistance.
Bus bookings – \$10 per person. RSVP to Colleen Thomas at 0428 046 999 by 2/11/23.

Bus will leave Omeo Golf Club at 10am, visiting each garden. Bus will return to Omeo Golf Club by 4.15pm.

You may choose to follow the Tagalong Tour separately in your own vehicle.
Carpooling is encouraged owing to limited parking access at venues.



**Community Centre
Swifts Creek Inc.**

ABN 76 381 866 949

Calling for Expressions of Interest

What Rural Skills courses would you like to attend in early 2025?

Chemical users course?

Beekeeping?

Chainsaw handling?

Small engine repair?

Fencing?

Cheesemaking?

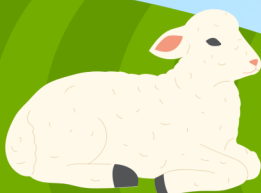
Web page design?

Something else???

**Contact the Community Centre Swifts
Creek with your ideas:**

E: ccswiftscreek@gmail.com

M: 0491 697 298



HEY HEY



IT'S SATURDAY...

16TH NOVEMBER 2024!

OMEO & DISTRICT SHOW

Quick Shears Friday 15th

... extra horse events on Sunday 17th

For all the details go to:

- www.omeoshow.com.au
- [Showdayonline.com /Omeo](http://Showdayonline.com/Omeo)



For lodging Main Pavilion entries:

- 5-7 pm Wed 13th & Thurs 14th, 10am-3pm Friday 15th
Skip the entry paperwork queues - enter & pay on-line first.
- Judging of Pavilion entries starts 5pm Friday 15th



Another great Show coming up for Omeo & District.
Help make it terrific - be a part of it,



Queries? Contact Lisa Lee Secretary omeoshowsec@gmail.com 0499 192 722

Ad 30/10/24